



# RESPECT REFLECT CONNECT

## A WARM WELCOME TO PROSPECTIVE FAMILIES

International School Ruhr is proudly situated in Germany's growing energy capital, Essen, providing high quality international education to international and local families. We are a thriving international community of over 30 nationalities, our inquiry-based and future skills approach provides a rich learning environment which supports each student's individual pathway.

We are proud to be part of the SBW Haus des Lernens AG group, and seek to embed SBW fractal elements and future skills into our daily learning experiences.

IS Ruhr is accredited by the International Baccalaureate to offer the Primary Years Programme – in our Early Years and Primary Years sections for students aged 3 to 12, as well as the Diploma Programme in Grade 11-12. In our Middle Years, students aged from 12 – 16 prepare for the Cambridge IGCSE examinations in Grade 10.

Our family friendly school encourages students, parents and staff to live our vision - Respect, Reflect and Connect, on a daily basis. We work together as a community to further implement our mission statement that focuses on daring to do what you dream, responsible citizenship and creating positive change in the world. We very much look forward to welcoming you to IS Ruhr soon, so you can experience our school first hand.

*Simon Vanderkelen*  
Head of School



LEARN MORE:

IS-RUHR.DE

## WELCOME TO THE PRIMARY YEARS

I welcome you to explore our wonderful learning community here at International School Ruhr, situated in the heart of Essen. As the Head of Primary Years, I am committed to providing a safe, enriching and inspiring environment where students are empowered to inquire, discover, and grow.

Through the International Baccalaureate PYP framework, our experienced and international Primary school team foster curiosity, critical thinking, and a lifelong love of learning, equipping our students with the skills and knowledge they need to thrive in an ever-changing world. We believe that children learn best when actively engaged in the learning process, asking questions, exploring concepts, and making meaningful connections.

At IS Ruhr our families are active participants in their child's educational journey. Our dedicated teachers and staff work together, with our supportive parent network, to create a nurturing and inclusive environment where every child feels valued, supported, and celebrated.

I look forward to welcoming you to our school, where you can experience firsthand the warmth of our community.

*Rebecca Warburton*  
Head of Primary Years



## WELCOME TO THE SECONDARY YEARS

It is with great pleasure that I extend a warm welcome to our dynamic secondary years program at International School Ruhr. As the Head of Secondary Years, I am honored to lead a diverse team of dedicated educators in providing a rich and holistic educational experience that nurtures intellectual curiosity, fosters critical thinking, and cultivates international mindedness, while respecting each student's individual learning style.

Through our internationally recognized programmes, our students receive internationally recognized qualifications. We empower our students to excel academically while developing the skills and attributes necessary for success in a rapidly evolving world.

Our commitment to excellence extends beyond the classroom, as we provide a supportive and inclusive environment where every student is encouraged to explore their passions, pursue their interests, and realize their full potential. Through the IB Diploma Creativity, Activity and Service programme, as well as Student leadership, we inspire our student community to become compassionate leaders who make a positive impact on society.

I invite you to explore all that the Secondary Years has to offer and discover the endless possibilities that await your child within our walls.

*María Robalino*  
Head of Secondary Years





## OUR VISION

### VISION

Respect, Reflect, Connect

### VISIÓN

Respetar, Reflexionar, Conectar  
(Spanish)

### दृष्टि

सम्मान, प्रतबिम्बि, संधि  
(Hindi)

### VISION

Respektiere, Reflektiere, Verbinde  
(German)

### VIZYONUMUZ

Saygı duy, düşün, birleştir  
(Turkish)



## AT IS RUHR, WE...

...respect ourselves, our community,  
our differences and diversity, as well  
as change and the environment.

...reflect on our actions, our impact  
and our self-regulation. We reflect on  
our progress and our growth-mindset.

...connect to our community, our sha-  
red values and relationships. We learn  
by connecting ideas and experiences,  
as well as local and global contexts.

# MISSION STATEMENT



IS Ruhr is a welcoming international community. We coach individuals to achieve their full potential, pursue their passions and become responsible global citizens. We embrace diversity, eager to create positive change. We connect understandings in purposeful learning environments.

## MISIÓN

IS Ruhr es una comunidad internacional acogedora. Nos enseñamos y apoyamos unos a otros para buscar alcanzar nuestro máximo potencial, perseguir nuestras pasiones y convertirnos en ciudadanos del mundo responsables. Aceptamos la diversidad, deseosos de promover un cambio positivo al conectar nuestro aprendizaje dentro entornos educativos diseñados con propósito.

*(Spanish)*

## MISYONUMUZ

IS Ruhr, uluslararası dost bir topluluktur. Tüm potansiyelimizi ortaya çıkarmak, tutkularımızın peşinden gitmek ve sorumluluk sahibi küresel vatandaşlar haline gelmek için birbirimize rehberlik ediyoruz. Kararlı öğrenme ortamlarında, farklı anlayışları birleştirerek olumlu değişimleri teşvik etmeye istekliyiz ve farklılıkları kucaklıyoruz.

*(Turkish)*

## समशन कथन

आईएस रूहर (IS Ruhr) एक स्वागतिपूर्ण अंतरराष्ट्रीय समुदाय है। हम एक-दूसरे को उत्कृष्टता की गिज में प्रशिक्षण देते हैं, अपने जुनून का पीछा करने और भ्रजम्मेदार वैश्विक नागरिक बने के सलए प्रेरणित करते हैं। हम व्यवस्था को अपनाते हैं, उददेव्यपूर्ण सशरि वाविरर् में समझ को जोड़कर सकारात्मक पररवणिन को ढिवा देने के सलए त्तिपर रहते हैं।

*(Hindi)*

## MISSION

Die IS Ruhr ist eine einladende internationale Gemeinschaft. Wir coachen uns gegenseitig, unser gesamtes Potential auszuschöpfen, unsere Leidenschaften zu verfolgen und verantwortungsbewusste Weltbürger zu werden. Wir legen Wert auf Vielfalt und setzen uns dafür ein, positive Veränderungen anzustoßen durch die Verknüpfung von Einsichten und Erkenntnissen in zweckorientierten Lernumgebungen.

*(German)*



## OUR LEARNING VALUES

Our learning values serve as the foundation for creating a positive and supportive learning environment and shape the way individuals engage with knowledge, challenges, and opportunities for growth.

### INNOVATIVE

thinking outside the box, entrepreneurs

### RESPECTFUL

principled, open-minded, sustainable

### RESILIENT

balanced, risk-takers

### REFLECTIVE

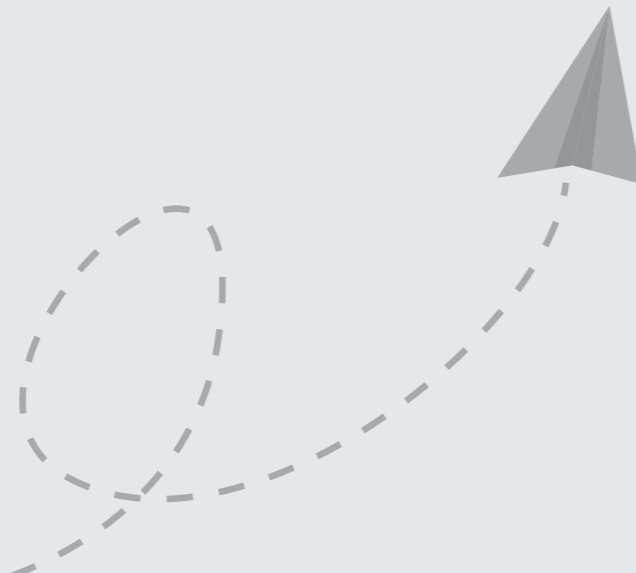
researchers, self-managers, inquirers

### PASSIONATE

caring, compassionate

### OPEN-MINDED

communicators, change makers



#### VALORES DE APRENDIZAJE

Innovadores, respetuosos, decididos, reflexivos, abiertos, amables, con principios, arriesgados.  
(Spanish)

#### अध्ययन मूल्य

नवाचारी, सम्मानिय, दृढ, प्रतबिम्ति, उदारमना, दयालु, ससदधाविादी, जोखमि लेने वाले  
(Hindi)

#### LERNWERTE

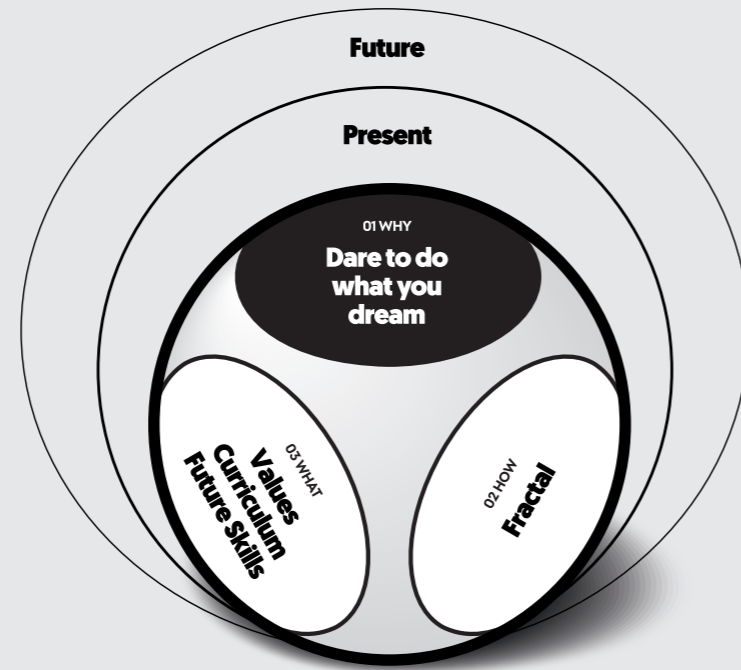
Innovativ, respektvoll, entschlossen, reflektiert, aufgeschlossen, freundlich, prinzipientreu, risikobereit.  
(German)

#### İLKELERİMİZ

Yenilikçi, saygılı, kararlı, düşünceli, açık fikirli, nazik, ilkeli, risk alan kişiler yetiştirmek.  
(Turkish)

## THE SBW MODEL

The SBW Model forms the backbone of our approach, focusing on three key questions: WHY, HOW, and WHAT. It is grounded in a deep understanding of future needs, ensuring our solutions are relevant and effective today in order to prepare for tomorrow.



## WHY

We delve into the meaning, purpose, and motivation behind education to inspire and empower our learners.

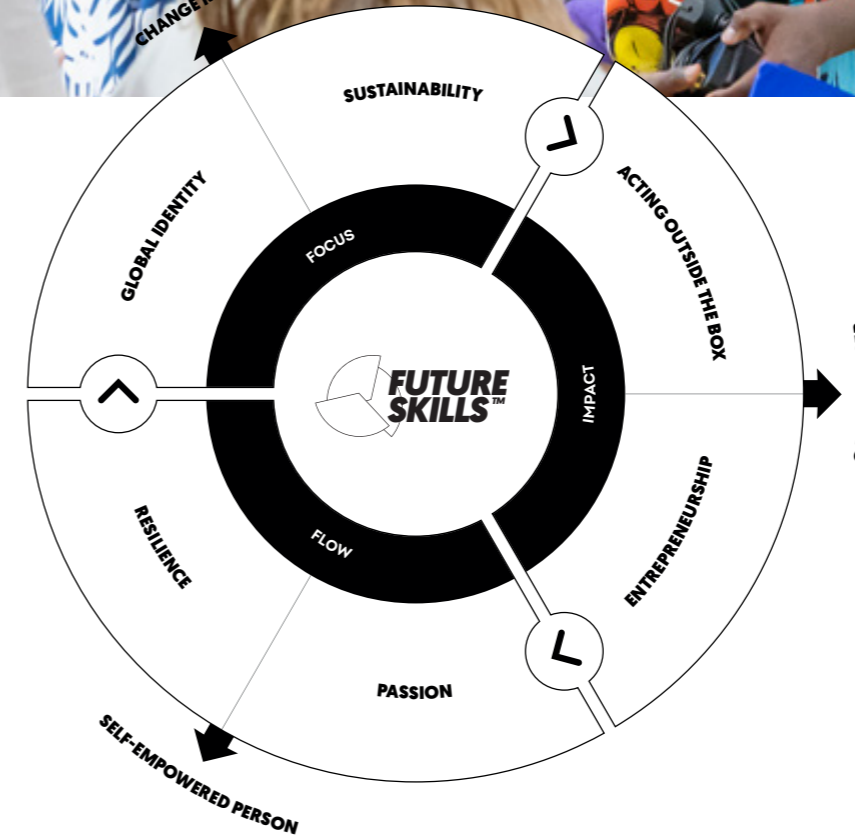
## HOW

Guided by the fractal concept, we embrace a holistic approach to learning, recognizing the interconnectedness of knowledge and skills.

## WHAT

Our curriculum emphasizes values, essential skills, and future readiness, preparing individuals to thrive in society.

LEARN MORE:  
WWW.SBW.EDU



## FUTURE SKILLS

For generations, parents, teachers, and educational researchers have wondered about which skills are needed to thrive in society and actively shape the future. The SBW group has developed the Future Skills Framework that identifies the following key attributes - Passion, Resilience, Global Identity, Sustainability, Thinking outside the box and Entrepreneurship. At IS Ruhr, we seek to embed these in our learning experiences daily.

## OUR JOURNEY

---

# 2010

### HERE WE GO

Grand opening of International School Ruhr in Villa Koppers at Moltkeplatz 61 in Essen for the 2010/2011 school year

# 2012

### WE GROW

Move into further premises at Moltkeplatz 1 in Essen, within walking distance of Villa Koppers.

# 2013

### IB WORLD SCHOOL

#### PRIMARY YEARS PROGRAMME AUTHORIZATION

Accredited as one of more than 5,700 authorised International Baccalaureate (IB) World Schools worldwide to deliver the Primary Years Programme (PYP) for children in EY1 – Grade 5.

# 2013

### CAMBRIDGE IGCSE

Accredited as provider of the International General Certificate of Secondary Education (IGCSE), a programme developed by Cambridge University and as an examination centre for Cambridge International Examinations (CIE).

# 2015

### IB WORLD SCHOOL

#### DIPLOMA PROGRAMME AUTHORIZATION

Accredited as one of more than 5,700 authorized International Baccalaureate (IB) World Schools worldwide to offer the International Baccalaureate Diploma (International Abitur), which entitles students to study at universities worldwide.

# 2017

### SO PROUD

The first students of our International Baccalaureate Diploma Programme are awarded their diplomas at graduation.

# 2017

### AUTONOMOS LEARNING ENVIRONMENT

Opening of the Learn Atelier at Moltkeplatz 1 in Essen.

# 2020

### OUR 10TH ANNIVERSARY

IS Ruhr has become an integral part of the educational infrastructure of the Ruhr area.

# 2020

### HOME LEARNING PLAN IMPLEMENTATION

Put in place for short-term weather-related, health-related, or other disruptions to face to face school as a result of the Covid-19 pandemic.

# 2024

### ECIS MEMBERSHIP

IS Ruhr becomes a member of ECIS (Educational Collaborative for International Schools), providing us with many flexible offerings for professional development.

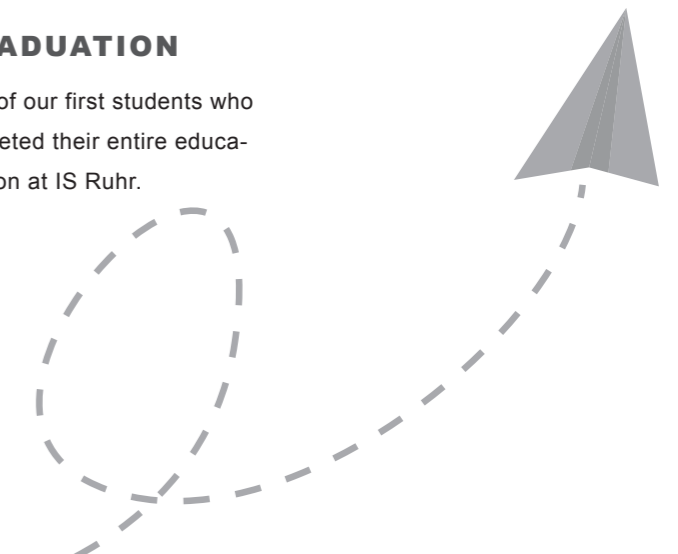
# 2024

### GRADUATION

Graduation of our first students who have completed their entire education at IS Ruhr.

## SINCE 2010

---





© Peter Prengel, Stadt Essen

## DISCOVER ESSEN & SURROUNDINGS

Explore Essen and its surroundings and discover its rich industrial heritage and post-modern arts scene. Visit the Folkwang Museum, the Zollverein UNESCO World Heritage Site, or perhaps the iconic 263-room Villa Hügel. Shop on the Rüttscheiderstraße and check out the latest in fashion and enjoy the cafe and restaurant scene. In Essen there's something for everyone, blending history, culture, and natural beauty.



© Peter Prengel, Stadt Essen



## WHAT IS AN IB EDUCATION?



At IS Ruhr, we are proud to be part of the International Baccalaureate (IB) community. IB isn't just about academics; it's about holistic student development and making positive changes in our world. Our educational approach nurtures each student's potential, aligning perfectly with the IB learner profile attributes: inquirers, knowledgeable, thinkers, communicators, principled, open-minded, caring, risk-takers, balanced and reflective.

### OUR GOAL?

To shape global citizens who respect themselves, others, and their world. We encourage international-mindedness, empowering students to thrive in today's complex and rapidly evolving context.

## APPROACHES TO LEARNING

Throughout all stages of the IB journey students are empowered to develop approaches to learning skills in the key areas of critical thinking, research, communication, self-management, and social and emotional skills. We believe that mastering the art of learning is crucial for a student's success, both within the classroom and in their future endeavors to become autonomous learners. Our curriculum is thoughtfully designed to integrate these skills in an age-appropriate manner, ensuring that students receive explicit instruction and implicit opportunities to develop these approaches.



# IB WORLD SCHOOL

International School Ruhr in Essen is a day school for students aged 3 to 18. Fully state-accredited, we are one of over 5,700 IB World Schools internationally. Primary students (ages 3 to 11) follow the Primary Years Programme (PYP), focusing on inquiry-based and transdisciplinary learning. Grades 6 to 10 follow an interdisciplinary approach to learning rooted in concept and inquiry-based teaching practices with emphasis on future skills. By the end of 10th grade students are prepared to undertake the International General Certificate of Secondary Education (IGCSE) external examinations, and Grades 11-12 follow the International Baccalaureate Diploma Programme. These programmes offer international and national recognition, preparing students for post-secondary studies within Germany and around the world.



## IS RUHR IB DIPLOMA RESULTS SINCE 2020

COHORT	2020	2021	2022	2023	2024
<b>IS RUHR'S TOTAL AVERAGE (POINTS)</b>	32	33.8	35.8	36.5	35
<b>IBDP WORLD AVERAGE (POINTS)</b>	29.92	33.02	31.98	30.24	30.32
<b>IS RUHR'S PASS RATE</b>	100%	100%	100%	100%	100%
<b>IBDP WORLD PASS RATE</b>	79.10%	88.96%	85.85%	79.67%	80%



## THE PRIMARY YEARS

---

The Primary Years at IS Ruhr comprise of the Early Years (ages 3 to 6), and Grades 1-5. Students benefit from a stimulating, engaging and challenging learning environment.



## EARLY YEARS

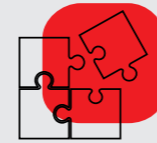
### AGE 3-6

#### NURTURING EACH CHILD'S CURIOSITY

Every child learns differently. Our IB Primary Years Programme in our Early Years tailors learning to each child's pace and style. Our multicultural environment enriches learning, balancing play and structured inquiry within the IB PYP framework. Through Units of Inquiry, we integrate areas such as Math and Language, prioritizing holistic development in a truly flexible way, in tune with the needs of each child. We also provide holistic experiences in German, Art, Music, and Physical Education.



#### ADVANTAGES AT A GLANCE



##### INCLUSIVE ENVIRONMENT

IS Ruhr's Primary Years Programme in the Early Years embraces cultural diversity, creating an inclusive environment where every child feels valued. We provide immersive English and enriching German instruction, nurturing linguistic skills and cultural understanding.



##### FLEXIBILITY

We offer childcare before and after school, providing for busy schedules. Plus, a hot lunch ensures children are well-nourished.



##### OUTDOOR LEARNING

Our programme strongly emphasizes outdoor learning, connecting children with nature to foster a deeper understanding of the environment.



##### INQUIRY-BASED LEARNING

Play-based inquiry fosters learning as students explore and understand the world. It encourages problem-solving, critical thinking, and imaginative play, creating joyful and meaningful learning opportunities.



##### TRANSDISCIPLINARY LEARNING

Rooted in transdisciplinary learning, students explore connections across subjects in real-life contexts in an age-appropriate manner.

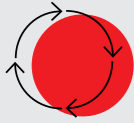


##### INTERNATIONAL MINDEDNESS

We promote respect and understanding of diverse backgrounds, preparing students to be global citizens who engage with the world peacefully.

## ADVANTAGES AT A GLANCE

---



### TRANSDISCIPLINARY LEARNING

A strategy that crosses many disciplinary boundaries to create a holistic approach.



### PLAY, INQUIRY-BASED LEARNING

Play-based learning, collaboration, experimentation, all have a place within inquiry-based learning experiences. Inquiry recognizes the child as being actively involved in their own learning and as taking responsibility for that learning.



### FLEXIBILITY

Child care is possible before and after school including lunch.



### LANGUAGE LEARNING

Multiple, authentic opportunities to learn language, learn about language and learn through language in English and German.



### TRANSPARENCY

Continuous information about learning.



### INTERNATIONAL MINDEDNESS

Commitment to create, articulate and model a culture of international-mindedness.

## PRIMARY YEARS GRADES 1-5

---

### EMPOWERING HOLISTIC LEARNING

Our curriculum, following the IB Primary Years Programme framework, fosters holistic development integrating socio-emotional, physical, and cognitive growth. Through Units of Inquiry, we cover main subjects comprehensively. Our qualified teachers adeptly guide students through inquiry-based learning, nurturing their potential and fostering a commitment to lifelong learning. IS Ruhr instills in students a sense of responsibility and respect for themselves, others, and the environment. We cultivate a love for learning, encouraging students to embrace diverse perspectives and develop self-management skills in a supportive environment. Recognizing diverse learning styles, we provide integrated experiences in German, Art, Music, and Physical Education. Our multicultural environment celebrates individuality while fostering international-mindedness and respecting each child's journey.





## SECONDARY YEARS GRADES 6-12

Our curriculum, preparing both the Cambridge IGCSE and the Diploma Programme, provides a dynamic and holistic education for students in grades 6 through 12 (ages 11 to 18). Following the International Baccalaureate (IB) programmes, our curriculum is designed to cultivate well-rounded individuals who excel academically, socially, and emotionally. Taking an interdisciplinary approach in the middle years, our qualified teachers share their expertise in the different subjects, through inquiry and concept-based teaching practices. In the secondary years, students undergo a transformative journey of growth and development. They sit the rigorous IGCSE external examinations at the culmination of 10th grade, and the Diploma Programme external examinations preparing them for the challenges of higher education and beyond at the end of 12th grade. Our commitment to inclusive education ensures that every student receives tailored support for their learning needs, fostering an environment where every individual can thrive.

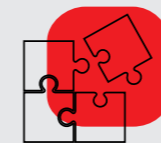
Student leadership groups empower students to take ownership of their educational experience, fostering collaboration, responsibility, and initiative. We offer pastoral care through personalized coaching. We guide students towards becoming autonomous learners, equipped with the skills and mindset necessary for lifelong success.

## ADVANTAGES AT A GLANCE



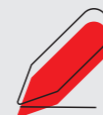
### COACHING PROGRAM

Our personalized coaching and pastoral care initiatives nurture students' holistic development, supporting their emotional well-being and personal growth throughout their secondary education.



### INCLUSION SUPPORT

Our tailored support for diverse learning needs ensures that every student receives the assistance they require to reach their full potential, fostering an inclusive and supportive learning environment.



### AUTONOMOUS LEARNING SKILLS

By fostering autonomy and self-directed learning, we empower students to take ownership of their education, equipping them with the skills necessary for success in an ever-changing world.



### STUDENT LEADERSHIP DEVELOPMENT

Through participation in leadership groups, students develop essential skills such as communication, teamwork, and decision-making, preparing them to become confident and effective leaders in their communities.



### EXTERNAL EXAMINATION CERTIFICATION

By sitting the IGCSE and Diploma Programme external examinations, students gain internationally recognized certifications, enhancing their academic credentials and opportunities for further study. These credentials are recognized as equivalent to the German Mittlere Reife and Abitur.



### RIGOROUS ACADEMIC PREPARATION

Our curriculum, aligned with the IB programmes, prepares students for academic excellence, setting them up for success in higher education and future careers both in Germany and abroad.



### GLOBAL IDENTITY AND INTERNATIONAL MINDEDNESS

As an international school, we offer a diverse and multicultural environment that fosters understanding, tolerance, and global awareness, preparing students to thrive in a globally interconnected society.

# SCHOOL LIFE

---

## EARLY MORNING & AFTER SCHOOL CARE

International School Ruhr Early Morning & After School Care offers complete flexibility. We provide qualified childcare outside official school hours – from morning to evening. The Early Morning Care starts at 7.30 and takes care of your child until the start of school at 8.15. After School Care takes place directly after class finishes and ends daily at 16.30. After School Care is not offered on Fridays or on the last day of term.

## AFTER SCHOOL ACTIVITIES

IS Ruhr offers After School Activities to nurture creativity, learn new skills, and stay active. Programmes run after school on Monday to Thursday. Those include the Drama Club, piano lessons, and Choir. Students enjoy supervised fun, interacting across age groups. Separate registration and fees apply for Early Morning and After Care programs. Interested? Contact us at +49(0)201-479 104 09 or [info@is-ruhr.de](mailto:info@is-ruhr.de) for more information.

## SUPPORTING THE MISSION OF THE SCHOOL

The Parent Association (PA) is an active and committed parents' organization that meets on a regular basis. The main focus of the PA is the planning of events and activities to enrich and strengthen the school community, and to assist the school in building its profile in Essen, the Ruhr region and beyond.

## EVENTS

Our events unite our community and are a chance for our students, parents, staff and partners to come together to build an even stronger school.

## CATERING

We all know how important food is for our children. IS Ruhr uses a company that prepares school lunches from fresh produce using regional ingredients wherever possible. Vegetarian, gluten-free, and nut-free alternatives are available daily.





FIA EUROPEAN CHAMPIONSHIP



FIA EUROPEAN CHAMPIONSHIP

# DARE TO DO WHAT YOU DREAM

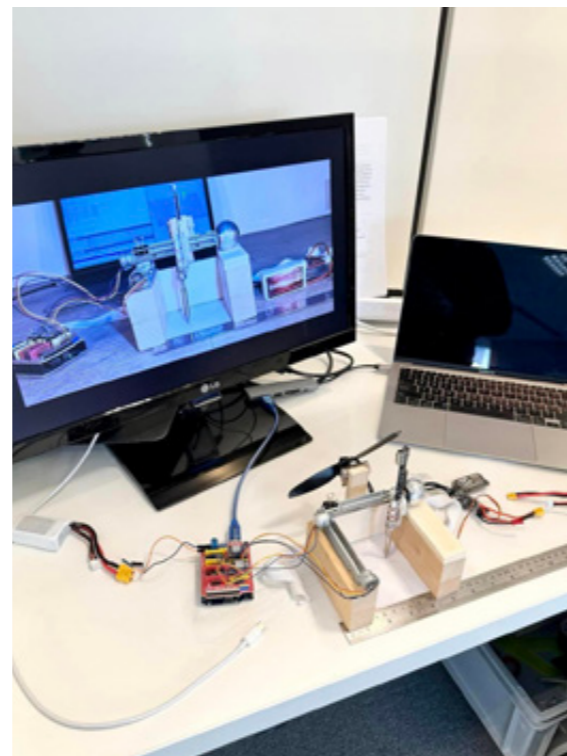
At IS Ruhr, we embrace the SBW call to action - "Dare to do what you dream!". Our students and staff exemplify this spirit, as seen in their successes, such as winning competitions like „Jugend Forscht.“ This renowned event highlights innovation in science and technology, but it's just one example of our commitment to hands-on learning. From boasting a triumphant triathlete to a karting champion and multiple international dance contest winners, our school community thrives on diverse talents. Holistic learning is paramount to us and through engaging field trips and other activities, we offer experiences that go beyond classroom. With this call to action guiding us, we empower students to pursue their passions boldly, fostering a culture of ambition and accomplishment. Join us as we transform dreams into achievements and reimagine education.



BULGARIAN READING COMPETITION



JUGEND FORSCHT - SCIENCE, TECHNOLOGY, ENGINEERING AND MATHEMATICS (STEM) CONTEST



ESSENER FIRNENLAUF

# OUR ADMISSIONS PROCESS



## 01 INITIAL INTERVIEW

After the initial contact we arrange an interview to get to know you better. Here, the focus is on sharing your child's educational journey with us so that we can explain how IS Ruhr can help your family.



## 02 DOCUMENTATION

During this stage of the process, you will receive all the required documents to be completed and submitted to progress to the next stage. We are always available by phone and email to answer any further questions you may have at this point.



## 03 ADMISSIONS

### PRIMARY YEARS EARLY YEARS 1-3

Admission to our Early Years Center is possible at any time, provided there is a place available.

### PRIMARY YEARS GRADES 1-5

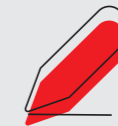
In our Primary School it is possible to start at anytime, provided there is a place available. Before admission, we must receive all documents (e.g. previous reports and a confidential report from your child's current school, sent directly by our Admissions Manager). Before a final decision is made, your child will be invited to attend up to three trial days in their potential class.

### SECONDARY YEARS GRADES 6-12

Depending on the availability of places, starting in our Secondary School is possible at any time. Before admission, we must receive all documents (e.g. previous reports and a confidential report from your child's current school, sent directly by our Admissions Manager). A written placement test must be taken in English and Mathematics. After this we offer trial days as well as an interview with our Head of Secondary Years for students entering Grades 9-12.

## 04 SIGNATURE

This is the final stage of the process. Once the contract is signed, we will inform you of the start date for your child. Throughout each stage of the process we will keep in touch with you. Our staff are very familiar with welcoming new students and families and understand what transition means.







## SCHOOL FEES

At IS Ruhr, our school fees cover a comprehensive range of services, ensuring your child's educational journey is enriching and inclusive. These fees include all online course materials, access to cutting-edge teaching software, and subsidies for exciting school field trips within and outside Germany. We prioritize holistic development, reflected in our fees covering pastoral care. This ensures every student receives support academically, emotionally, and socially. We take pride in our support for learners of English as an Additional Language, aiding their integration and success. As a fully state-accredited school and one of 5,700 International Baccalaureate (IB) World Schools globally, IS Ruhr maintains the highest educational standards. Please note, our school operates solely on fees from parents and does not receive public subsidies. Our commitment to excellence is therefore sustained by the community we serve.

## SCHOLARSHIPS

At IS Ruhr, we are committed to fostering an inclusive and accessible learning environment. Our goal is to ensure that students, regardless of financial constraints, have access to international education. Applications are welcome from December until the end of January for the upcoming academic year. All applications must be submitted in written form using the Scholarship/Financial Aid Application Form, which can be found on our website [www.is-ruhr.de](http://www.is-ruhr.de). If you have any inquiries or require further assistance regarding the financial aid application process, feel free to reach out to our Admissions Manager at [info@is-ruhr.de](mailto:info@is-ruhr.de). We look forward to supporting you with your child's educational journey.

## IS RUHR SCHOOL FEES 2024/2025

### ANNUAL SCHOOL FEES IN €

#### EARLY YEARS (EY 1-3)

08.15–15.30, Wednesdays until 12.30  
11,990 Euro

#### ADDITIONAL CARE EARLY YEARS

Early Years Early Morning Care  
07.30–08.15  
675 Euro

#### EARLY YEARS AFTER-SCHOOL CARE

15.30–16.30, Wednesdays 12.30–16.00  
No After School Care offered on Fridays  
Fees depending on booked activities

#### PRIMARY SCHOOL (Grade 1– Grade 5)

08.15–15.30, Wednesdays until 12.30  
16,880 Euro

#### ADDITIONAL CARE PRIMARY SCHOOL

Primary School Early Morning Care  
07.30–08.15  
675 Euro

#### PRIMARY SCHOOL AFTER-SCHOOL CARE

Monday to Thursday 15.30-16.30, Wednesdays 16.00  
No After School Care offered on Fridays  
Fees depending on booked activities

#### SECONDARY SCHOOL (Grades 6–10)

08.15–15.35, Wednesdays until 12.35,  
Mondays + Thursdays Coaching until 16.00  
17,220 Euro

#### IB DIPLOMA PROGRAMME

(Grade 11 and Grade 12)  
08.15–15.35,  
Mondays + Thursdays Coaching until 16.00  
18,510 Euro  
Exam Fees depending on published fees by the IB

Enrolment Fee 500 Euro

School Development Fee 2,200 Euro



# QUESTIONS?

**FEEL FREE TO CONTACT US!**

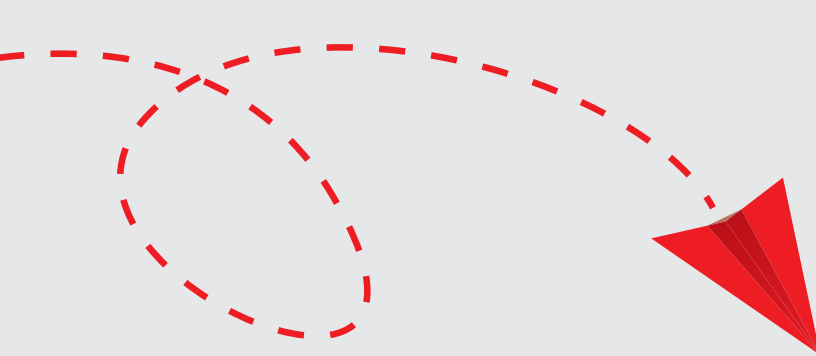
 +49(0)201 479 104 09

 [info@is-ruhr.de](mailto:info@is-ruhr.de)

**ACCREDITATION:**



**MEMBERSHIP:**



International School Ruhr  
Moltkeplatz 61 + 1  
DE-45138 Essen

+49(0)201- 479 104 09  
info@is-ruhr.de  
www.is-ruhr.de

**FOLLOW US:**

